

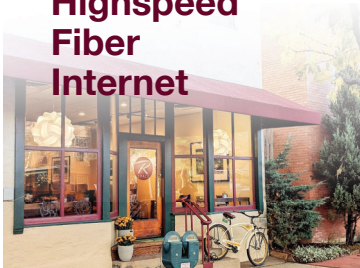


COWORKING & MEETING MEMBERSHIPS

970-422-1285
734 E 2nd Ave
Durango, CO 81301
rspacedurango.com

R Space was founded with the idea that you don't need to go out of town or spend a ton of money on an away-from-home office to be more productive or efficient with your work. We offer small businesses and individuals a much more convenient and affordable solution.

Highspeed Fiber Internet



Flex Desks



Meeting & Conference Rooms



Types of Memberships

DAILY DROP-IN & PUNCH PASS

\$30 / DAY
\$25 / PUNCH

Full day of access with all amenities
Punches are good for 90 days
Purchase 5 punches to get the discounted daily rate

FULL TIMER

\$200 / MONTH

Access 7am-7pm seven days a week

THE 24/7

\$250 / MONTH

Co-work anytime 24/7

THE ONE WEEK WARRIOR

\$100 / WEEK

7 days of collated access

MEETING MEMBER

\$25 / MONTH

This is a meeting membership only.
Includes member pricing on meeting rooms, 50% off!
All membership are included!

ANNUAL MEETING MEMBER

\$200 / YEAR

This is a meetings only annual membership
includes member pricing (50% off) all year long
All membership are included!

***Custom memberships available upon request.**

Membership Benefits

- Corporate Rates at the Rochester Hotel
- Access 7am-7pm for most memberships
- Ludicrous speed, low-latency fiber Internet (50mbps up/down, 100mbps burst)
- FREE coworking days at dozens of other coworking locations across the US
- Coffee, snacks & all amenities!
- Tech support
- Lending library
- Dry cleaning service (before 9am)
- Optional mail receipt service
- FREE parking out back (if available)
- FREE private access to any of our currently unscheduled conference rooms



CONFERENCE ROOM PRICING

970-422-1285
734 E 2nd Ave
Durango, CO 81301
rspacedurango.com

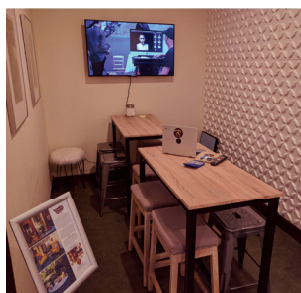
R Space members have access to a wide variety of inspiring meeting spaces. From small brainstorming sessions to corporate seminars, we have the perfect rooms to inspire productivity, collaboration & fun!



ENGINEER MOUNTAIN

**\$100/HOUR
(\$50/HOUR MEMBERS)**

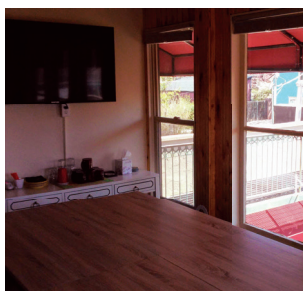
Our largest meeting room that can accommodate 40 people standing and 25 people seated.



LITTLE BEAR MOUNTAIN

**\$40/HOUR
(\$20/HOUR MEMBERS)**

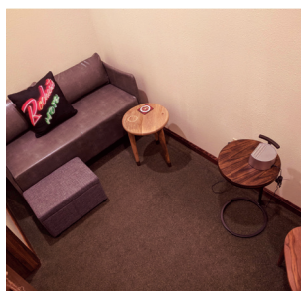
Designed to accommodate up to 8 people seated around standing height tables.



SUNSHINE PEAK

**\$60/HOUR
(\$30/HOUR MEMBERS)**

A fully enclosed meeting room with windows spanning across two of the walls. This room accommodates up to 12 people.



PERINS PEAK

**\$20/HOUR
(\$10/HOUR MEMBERS)**

The Room is good for small meetings in an intimate setting for up to 3 people seated comfortably.



TWILIGHT MOUNTAIN

**\$40/HOUR
(\$20/HOUR MEMBERS)**

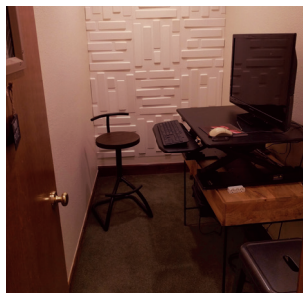
This meeting room has a large glass table accommodating up to 8 people seated.



SMEILTER MOUNTAIN

**\$60/HOUR
(\$30/HOUR MEMBERS)**

A fully enclosed meeting room that can accommodate up to 12 people seated.



ANIMAS MOUNTAIN & TWIN BUTTES

**\$20/HOUR
(\$10/HOUR MEMBERS)**

Perfect for podcasting or small meetings up to 4 people.



THE SECRET GARDEN

\$ BASED ON EVENT

A lush, beautiful and intimate setting for special events, working lunches, receptions & celebrations for up to 100 people.

Options to use The Secret Garden and full bar, R Bar, at the Rochester are available